

HAWK'S NEST

Raymore's Inclusive Playground at Hawk Ridge Park

A UNIVERSALLY ACCESSIBLE PLAYGROUND PROJECT



SPONSORSHIP OPPORTUNITIES

BROUGHT TO YOU BY:



Where **limitations** are forgotten,
and **differences** are celebrated



Why do playgrounds matter?

Play is a critical part of the social, emotional, cognitive and physical development of every child. Unfortunately, the vast majority of playgrounds deny children with disabilities and critical illnesses the opportunity for exercise, entertainment and social interactions which other children enjoy. In fact, only a small percentage of fully accessible playgrounds exist within our nation and these are insufficient to serve 43 million Americans with disabilities.

An **Inclusive Playground** is specifically designed to remove physical and social barriers so ALL children, with and without disabilities and/or critical illnesses, can play side by side with their peers and families.

To be located at Hawk Ridge Park in Raymore, Mo., this playground will be an Unlimited Play inclusive playground — a place where limitations will be forgotten and differences are celebrated!

The Vision

Our vision is simple – to create a space where everyone can experience the happiness of playing with friends.



The Hawk's Nest playground at Hawk Ridge Park will do just that. Children of all abilities will be able to play together on a custom-designed inclusive playground.

Physical and social barriers will be eliminated and a playground for all people of all abilities will promote understanding, respect and a real sense of community.

Our commitment to this project is not out of any sense of obligation, but rather we are doing it because it is the right thing to do not only for Raymore, but for all of Cass County and the region.

We hope you stand with us and support our vision and the development of Cass County's first inclusive playground.

An investment in the Hawk's Nest inclusive playground is an investment in more than a jungle gym or equipment. It's an investment in the happiness of countless children who will no longer have to sit on the sidelines. It's an investment in the elation the parents of a child with disabilities will feel when they can play alongside their child for the first time.

It's an investment in our community's future. It's an investment in the right thing for Raymore.





Raymore

Custom products are shown as conceptual.

YOUR COMMUNITY'S UNLIMITED PLAY PLAYGROUND

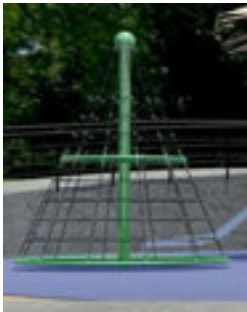
- Safe, smooth, spongy surfacing
- Ramps from bottom to top
- Transfer stations throughout
- Specialized seating and handholds
- Slanted/graduated climbing elements
- High back swings
- Saucer swings
- Stainless steel and molded slides
- Musical elements
- Parallel play
- Lots of shade
- Fun, educational play panels
- And much more!

Join us in the efforts to build this universally accessible playground.

Your generous support will enable ALL children and caregivers of all abilities the opportunity to experience the joys and benefits of play. This destination playground will truly impact 10,000 people each year.



2-5 Section
\$45,000



Rotating Deck with Net
\$30,000



Treehouse
\$20,000



Shade 5-12 Section
\$18,000



Tikes Peak
\$15,000



Spiral Slide
\$15,000



Rock Climbing
\$12,500



Trail Climber
\$4,500



Telescope Panel
\$4,000



Jungle Climb
\$3,500



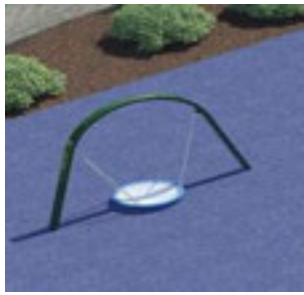
Double Seat
\$3,000



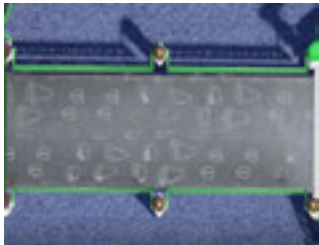
Ladybug Panel
\$2,500



Swing Set
\$25,000



Dish Swing
\$20,000



Custom Ramp with Tracks
\$15,000



Rope Climber
\$12,500



Wildlife Roofs
\$12,000

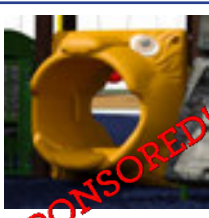


Morphus Slide
\$10,000



SPONSORED!

Monkey
Lookout
\$5,000



SPONSORED!

Animal Crawl
Tunnel
\$2,500



Benches (~~5~~)
4 available!
\$1,500 each

"PLAYGROUNDS
MAKE ME FEEL
POWERFUL."

Brendan, Age 10

From individuals making donations, businesses sponsoring playground equipment, corporations contributing grants and volunteers offering gifts of time, we welcome your involvement.

Here's How You Can Help

- Make a monetary donation using the form on the opposite page.
- Donate your time to a fundraising event or Community Build Day. Complete and mail the contact information on the opposite page to be contacted about upcoming volunteer opportunities.
- Donate goods/services such as concrete, fencing, shrubs, etc. Complete and mail the contact information on the back of this booklet, noting what goods/services you would like to donate.

**TOGETHER,
WE CAN CREATE
YOUR
DESTINATION
PLAYGROUND.**

Panels

\$3,500 each



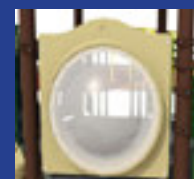
Abacus



A-Maz-ing



Hypnotize



Bubble



Four-the-Win

Musical Instruments

\$5,000 each



Step 1: Complete Donor/Volunteer Information: (please print)

Name: _____

Company/Organization (if applies): _____

Address: _____

City: _____ State: _____ Zip: _____

Phone: () - E-mail: _____

If you are only wanting to be contacted about volunteer opportunities such as community work days, leave the next sections blank.

Step 2: Choose Your Donation

❏ Donor Wall

Leave a legacy... Put your name on our playground! Donor Wall Sponsorships are \$200. The donor wall will be located at Hawk's Nest at Hawk Ridge Park.

YOUR DONOR WALL INSCRIPTION:

Limited to 20 characters (spaces are considered a character)

❑ Equipment Sponsorship

Please note that item quantities are limited and may no longer be available. Raymore Community Foundation will confirm sponsorship upon receipt of both this application and the gift amount. Equipment may not be identical to photos in this catalog (color variance, etc.) Sign size and color may vary and be placed either on or near the piece of equipment in compliance with safety standards.

Raymore Community Foundation is a 501(c)3 non-profit organization, which makes your donation tax deductible.

SELECT EQUIPMENT ITEM FROM THIS CATALOG: _____

Step 3: Payment

PAYMENT METHOD ☐ Credit Card ☐ Check ☐ Pay Online at www.raymore.com/HawksNest

Name on Credit Card: _____

Amount to Charge to Card: _____ Credit Card No.: _____

Security Code: _____ Credit Card Type: _____ Expiration Date: _____

Please make checks payable to:

Raymore Community Foundation

c/o City of Raymore

100 Municipal Circle, Raymore, MO 64083

Please write **Hawk's Nest** in memo line

Questions? Contact Communications Director Mike Ekey
816-892-3109 or MEkey@Raymore.com



What is Unlimited Play?

Unlimited Play is an award winning nonprofit organization that builds universally inclusive playgrounds to promote health and wellness and change communities by providing freedom of play for ALL children. The transformational power of an inclusive playground brings kids and adults of all abilities together to play and learn from each other.

Unlimited Play is a 501(c)3 non-profit organization that helps to plan, design and build fully accessible playgrounds. Unlimited Play playgrounds allow all children – regardless of their abilities – to play together. A valuable resource in our community, Unlimited Play has unique expertise in this area and is available to assist in the development of inclusive playgrounds that promote dignity, understanding and respect among children. In 2016, Little Tikes Commercial and Unlimited Play announced a partnership to help provide the magic of outdoor play to children of all abilities.



New Partners in Inclusive Play