

HADLEY'S HAVEN

TO BE LOCATED AT THE ANNA CITY PARK

A UNIVERSALLY ACCESSIBLE PLAYGROUND PROJECT



SPONSORSHIP OPPORTUNITIES

BROUGHT TO YOU BY:



Where **limitations** are forgotten,
and **differences** are celebrated



Why do Playgrounds Matter?

Play is a critical part of the social, emotional, cognitive and physical development of every child. Unfortunately, the vast majority of playgrounds deny children with disabilities and critical illnesses the opportunity for exercise, entertainment, and social interactions which other children enjoy. In fact, only a small percentage of fully accessible playgrounds exist within our nation and these are insufficient to serve 43 million Americans with disabilities.

An **Inclusive Playground** is specifically designed to remove physical and social barriers so ALL children, with and without disabilities and/or critical illnesses, can play side by side with their peers and families.

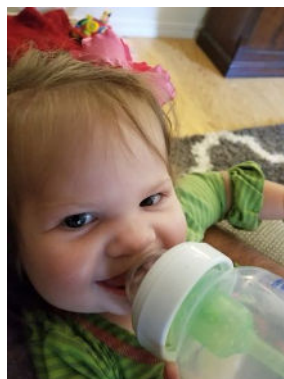
To be located at City Park in Anna, IL Hadley's Haven Playground will be an Unlimited Play inclusive playground honoring the life of Hadley Chase — a place where limitations will be forgotten and differences are celebrated!



The Vision

Hadley Chase Ashby was born on April 22, 2016 with a birth defect and complications from surgery that left her with multiple disabilities. Hadley lived with cerebral palsy, hydrocephalus, and epilepsy. Despite all of these struggles, Hadley lived a happy life.

December of 2017, Hadley had a catastrophic shunt failure and passed away on December 15th. Shortly after Hadley's passing, her mother decided to honor Hadley by building a playground, where all kids could play no matter their abilities. All the children that bless our lives with their extraordinary abilities can play together in one playground. Hadley will live on forever in our hearts and in our love of play.





YOUR COMMUNITY'S Unlimited Play Playground

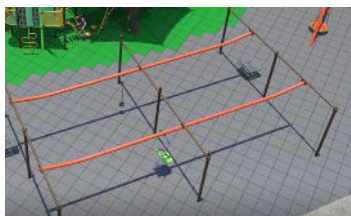
- Safe, smooth, spongy surfacing
- Ramps from bottom to top
- Transfer stations throughout
- Specialized seating and handholds
- Slanted/graduated climbing elements
- High back swings
- Saucer swings
- Stainless steel and molded slides
- Musical elements
- Parallel play
- Lots of shade
- Fun, educational play panels
- And much more!

Join us in the efforts to build this universally accessible playground.

Your generous support will enable ALL children and caregivers of all abilities the opportunity to experience the joys and benefits of play. This destination playground will truly impact ten thousand people each year.



Team Totter
\$15,000



Zip Line
\$30,000



Flower Posts
\$4,500 each
4 available



Slide 5-12 Section
\$18,000



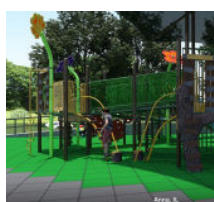
Tree house Climber
\$12,000



Rotating Net w/Deck
\$25,000



Turnabout
\$15,000



Log Climber
\$10,000



Infinity Climber
\$8,000



Rock Climber
\$5,000



Direction Climber
\$5,000



Step Climber
\$4,500



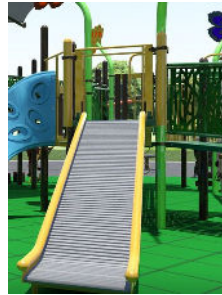
Swing Set
\$35,000



Rock'n Raft
\$30,000



Cat Tails
\$15,000



Roller Slide
\$15,000



Flower Climber
\$12,000



Disc Swing
\$10,000



“PLAYGROUNDS
MAKE ME FEEL
POWERFUL.”

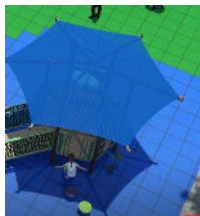
Brendan, Age 10



Swing Set Shade
\$25,000



Rock'n Raft Shade
\$15,000



2-5 Shade
\$10,000



Twist Slide
\$15,000



Diamond Climber
\$12,000



Scrambled Scales Panel
\$5,000
2 available



“PLAYGROUNDS
MAKE ME FEEL
POWERFUL.”

Brendan, Age 10



Who is Unlimited Play?

Unlimited Play is an award winning nonprofit organization that builds universally inclusive playgrounds to promote health and wellness and change communities by providing freedom of play for ALL children. The transformational power of an inclusive playground brings kids and adults of all abilities together to play and learn from each other.

Unlimited Play is a 501(c)3 non-profit organization that helps to plan, design and build fully accessible playgrounds. Unlimited Play playgrounds allow all children – regardless of their abilities – to play together. A valuable resource in our community, Unlimited Play has unique expertise in this area and is available to assist in the development of inclusive playgrounds that promote dignity, understanding and respect among children. In 2016 Little Tikes Commercial and Unlimited Play announced a partnership to help provide the magic of outdoor play to children of all abilities.



New Partners in Inclusive Play

From individuals making donations, businesses sponsoring playground equipment, corporations contributing grants and volunteers offering gifts of time, we welcome your involvement.

Here's How You Can Help

- Make a monetary donation using the form on the back of this booklet.
- Donate your time to a fundraising event or Community Build Day. Complete and mail the contact information on the back of this booklet to be contacted about upcoming volunteer opportunities.
- Donate goods/services such as concrete, fencing, shrubs, etc. Complete and mail the contact information on the back of this booklet, noting what goods/services you would like to donate.



TOGETHER
WE CAN CREATE
YOUR DESTINATION
PLAYGROUND

Step 1: Complete Donor/Volunteer Information: (please print)

Name: _____

Company/Organization (if applies): _____

Address: _____

City: _____ State: _____ Zip: _____

Phone: (____) _____ - _____ E-mail: _____

If you are only wanting to be contacted about volunteer opportunities such as community work days, leave the next sections blank.

Step 2: Choose Your Donation

☐ Donor Wall

Leave a legacy... Put your name on our playground! Donor Wall Sponsorships are \$200. The donor wall will be located at Hadley's Haven.

YOUR DONOR WALL INSCRIPTION:

Limited to 20 characters (spaces are considered a character)

☐ Equipment Sponsorship

Please note that item quantities are limited and may no longer be available. Unlimited Play will confirm sponsorship upon receipt of both this application and the gift amount. Equipment may not be identical to photos in this catalog (color variance, etc.) Sign size and color may vary and be placed either on or near the piece of equipment in compliance with safety standards.

Unlimited Play reserves the right to reject sponsorships.

Unlimited Play is a 501(c)3 non-profit organization which makes your donation tax deductible

SELECT EQUIPMENT ITEM FROM THIS CATALOG: _____

Step 3: Payment

PAYMENT METHOD Credit Card Check Pay Online at www.unlimitedplay.org

Name on Credit Card: _____

Amount to Charge to Card: _____ Credit Card No.: _____

Security Code: _____ Credit Card Type: _____ Expiration Date: _____

Please make checks payable to:

Unlimited Play, 5988 Mid Rivers Mall Dr., St. Peters, MO 63301

Please write Hadley's Haven

Any questions, please contact: (636) 757-3978

E-mail: natalie@unlimitedplay.org • www.unlimitedplay.org