

OSAGE COUNTY MISSOURI INCLUSIVE PLAYGROUND

in LINN, MO

A UNIVERSALLY ACCESSIBLE PLAYGROUND PROJECT



SPONSORSHIP OPPORTUNITIES

BROUGHT TO YOU BY:



Where **limitations** are forgotten,
and **differences** are celebrated



Why do Playgrounds Matter?

Play is a critical part of the social, emotional, cognitive and physical development of every child. Unfortunately, the vast majority of playgrounds deny children with disabilities and critical illnesses the opportunity for exercise, entertainment, and social interactions which other children enjoy. In fact, only a small percentage of fully accessible playgrounds exist within our nation and these are insufficient to serve 43 million Americans with disabilities.

An **Inclusive Playground** is specifically designed to remove physical and social barriers so ALL children, with and without disabilities and/or critical illnesses, can play side by side with their peers and families.

To be located in Linn, MO the Osage County Playground will be an Unlimited Play inclusive playground honoring children of all abilities – a place where limitations will be forgotten and differences are celebrated!

The Vision

We believe all children are created equal. For this reason we want to create an environment that will allow ALL children and their families to play together, regardless of their abilities. A place where all children and adults are accepted for who they are and not what they can or cannot do. Help us be able to build this playground, a place where children of all abilities play together, learn from one another, value differences and find strength to overcome obstacles.



YOUR COMMUNITY'S Unlimited Play Playground

- Safe, smooth, spongy surfacing
- Ramps from bottom to top
- Transfer stations throughout
- Specialized seating and handholds
- Slanted/graduated climbing elements
- High back swings
- Saucer swings
- Stainless steel and molded slides
- Musical elements
- Parallel play
- Lots of shade
- Fun, educational play panels
- And much more!

Join us in the efforts to build this universally accessible playground.

Your generous support will enable ALL children and caregivers of all abilities the opportunity to experience the joys and benefits of play. This destination playground will truly impact ten thousand people each year.



Swing Set
\$25,000



Full Canti Shade
\$10,000



Post Pyramid Shade
\$5,000

SOLD



Turn About
\$5,000

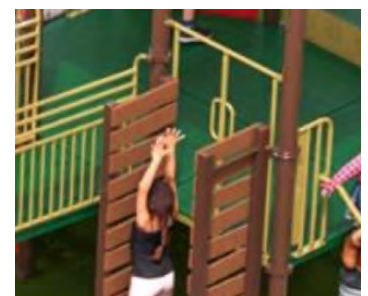


Slalom Slide
\$3,000

SOLD



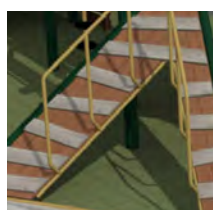
Elbow Slide
\$3,000



DBL Wall Climber
\$2,000



Culver Climber
\$2,000



X Plank Climb
\$3,000



Barn Panel
\$2,000



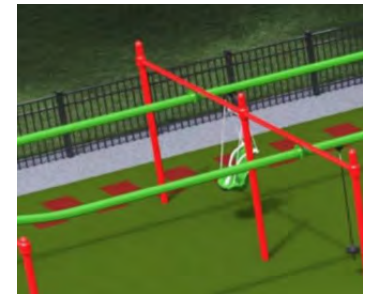
Gear Reach
\$1,000



Seven Station Play Factory
\$1,000

Join us in the efforts to build this universally accessible playground.

Your generous support will enable ALL children and caregivers of all abilities the opportunity to experience the joys and benefits of play. This destination playground will truly impact ten thousand people each year.



Rail Rider
\$15,000



Chimes
\$8,000



Concerto Vibes
\$5,500



Ring Challenge Ladder
\$5,000



Monkey Lean Out
\$3,000



Telescope Panel
\$3,000



Abacus Panel
\$2,000



Hypnotize Panel
\$1,500



Roller Slide
\$20,000

SOLD



Arch Swing
\$10,000



Tree House Pod
\$5,000



Plank Climb
\$3,000



Steel Seat Panel
\$2,000

SOLD



Tri Rock
\$2,000

SOLD



Concerto
Congas
\$1,000

SOLD



Matching
Game Panel
\$1,000

SOLD



Four the win
Panel
\$1,000



“PLAYGROUNDS
MAKE ME FEEL
POWERFUL.”

Brendan, Age 10



Who is Unlimited Play?

Unlimited Play is an award winning nonprofit organization that builds universally inclusive playgrounds to promote health and wellness and change communities by providing freedom of play for ALL children. The transformational power of an inclusive playground brings kids and adults of all abilities together to play and learn from each other.

Unlimited Play is a 501(c)3 non-profit organization that helps to plan, design and build fully accessible playgrounds. Unlimited Play playgrounds allow all children – regardless of their abilities – to play together. A valuable resource in our community, Unlimited Play has unique expertise in this area and is available to assist in the development of inclusive playgrounds that promote dignity, understanding and respect among children. In 2016 Little Tikes Commercial and Unlimited Play announced a partnership to help provide the magic of outdoor play to children of all abilities.

From individuals making donations, businesses sponsoring playground equipment, corporations contributing grants and volunteers offering gifts of time, we welcome your involvement.

Here's How You Can Help

- Make a monetary donation using the form on the back of this booklet.
- Donate your time to a fundraising event or Community Build Day. Complete and mail the contact information on the back of this booklet to be contacted about upcoming volunteer opportunities.
- Donate goods/services such as concrete, fencing, shrubs, etc. Complete and mail the contact information on the back of this booklet, noting what goods/services you would like to donate.



TOGETHER
WE CAN CREATE
YOUR DESTINATION
PLAYGROUND

Step 1: Complete Donor/Volunteer Information: (please print)

Name: _____

Company/Organization (if applies): _____

Address: _____

City: _____ State: _____ Zip: _____

Phone: (_____) _____ - _____ E-mail: _____

If you are only wanting to be contacted about volunteer opportunities such as community work days, leave the next sections blank.

Step 2: Choose Your Donation

Donor Wall

Leave a legacy... Put your name on our playground! Donor Wall Sponsorships are:

Silver \$100-\$999

Gold \$1,000-\$4,999

Platinum \$5,000 +

YOUR DONOR WALL INSCRIPTION:

Limited to 20 characters (spaces are considered a character)

Equipment Sponsorship

Please note that item quantities are limited and may no longer be available. Unlimited Play will confirm sponsorship upon receipt of both this application and the gift amount. Equipment may not be identical to photos in this catalog (color variance, etc.) Sign size and color may vary and be placed either on or near the piece of equipment in compliance with safety standards.

Unlimited Play reserves the right to reject sponsorships.

Unlimited Play is a 501(c)3 non-profit organization which makes your donation tax deductible

SELECT EQUIPMENT ITEM FROM THIS CATALOG: _____

Naming Rights Sponsor

\$100,000 or to Highest donor * name must be approved by the Board.

Step 3: Payment

PAYMENT METHOD Credit Card Check Pay Online at www.unlimitedplay.org

Name on Credit Card: _____

Amount to Charge to Card: _____ Credit Card No.: _____

Security Code: _____ Credit Card Type: _____ Expiration Date: _____

Please make checks payable to:

Unlimited Play, 5998 Mid Rivers Mall Drive Suite 220, St. Peters, MO 63304

Please write Osage County, MO Playground in memo line

Any questions, please contact: (636) 757-3978
E-mail: jim@unlimitedplay.org • www.unlimitedplay.org